



PETTITI GIUSEPPE s.p.a.

## AEROSILENT PICCOLO - SMALL - PETIT

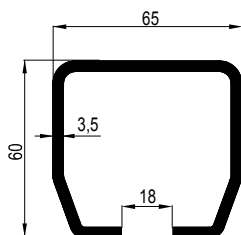
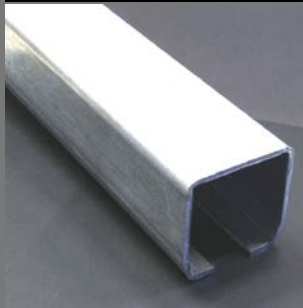
PORTATA CAPACITY	<b>Kg 120</b>	Per coppia di carrelli
PORTEE		For each pair of trolleys
APERTURA MAX. MAX OPENING OUVERTURE MAX	<b>3 m</b>	Pour couple de chariots

**CARRELLI ED ACCESSORI PER CANCELLI AUTOPORTANTI**

**TROLLEYS AND ACCESSORIES FOR CANTILEVER GATES**

**CHARIOTS ET ACCESSOIRES POUR PORTAILS AUTOPORTANTS**

### MONOROTAIA IN ACCIAIO

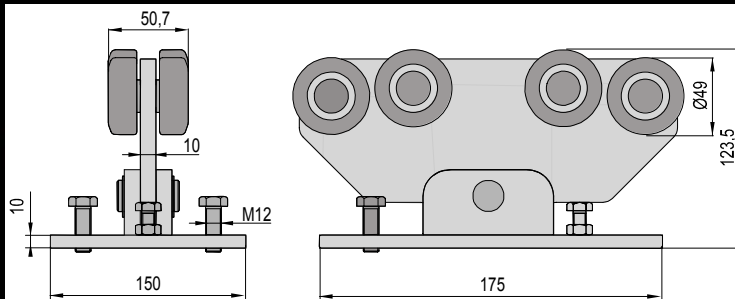


Zinked steel rail.

Monorail en acier zingue .

ART.	Confez. Box	Peso Kg Weight	
<b>G/AP65</b>	18 m n° 3x6 m	Kg/m 5,530	
<b>G/AP65/3</b>	18 m n° 6x3 m	Kg/m 5,530	

### CARRELLO BASCULANTE A 8 RUOTE



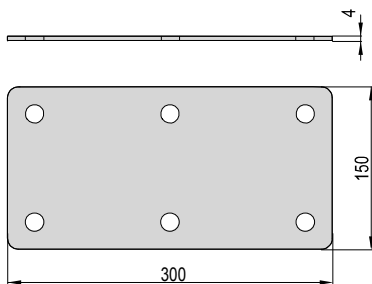
**CA/AP65** Cuscinetti zincati  
Zinked bearings  
Coussinets zingue

Oscillating trolley with 8 wheels.

Chariot oscillant avec 8 galets.

ART.	Confez. Box	Peso Kg Weight	
<b>CA/AP65</b>	1	7,000	

### CONTROPIASTRA PER CARRELLO

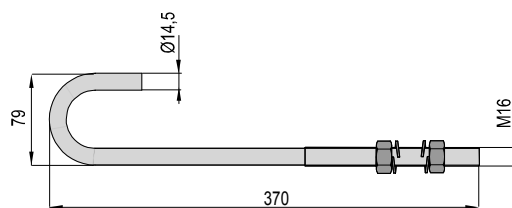


Counter plate for trolley, in zinked steel.

Controplaque pour chariot, en acier zingue.

ART.	Confez. Box	Peso Kg Weight	
<b>PIAS/AP6580</b>	1	1,400	

### TIRANTE IN ACCIAIO ZINCATO

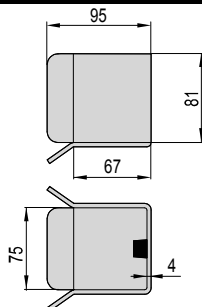
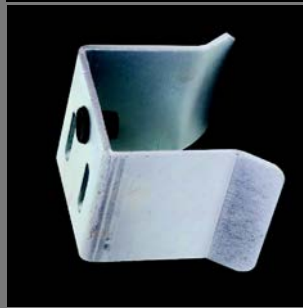


Fixing tie rods, in zinked steel.

Tirants de fixation, en acier zingue.

ART.	Confez. Box	Peso Kg Weight	
<b>TIR/16</b>	2	0,550	

### INCONTRO PER MONOROTAIA



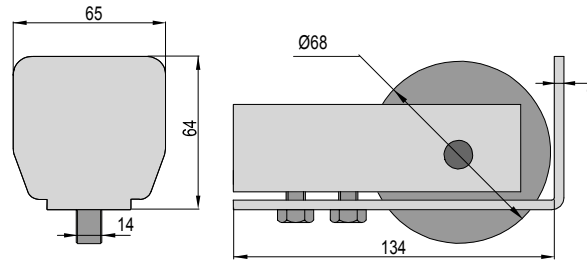
Cup for rail, in zinked steel.

Butee pour rail, en acier zingue.

ART.	Confez. Box	Peso Kg Weight	
<b>BAS75Z</b>	1	1,000	



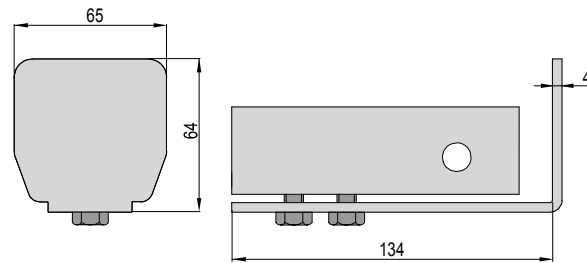
## SUPPORTO DI SOSTEGNO CON RUOTA



End stopper with wheel, in zinked steel.  
Embout extrémité avec roue, en acier zingue.

ART.	Confez. Box	Peso Kg Weight
TAP/65R	1	1,100

## SUPPORTO DI SOSTEGNO SENZA RUOTA

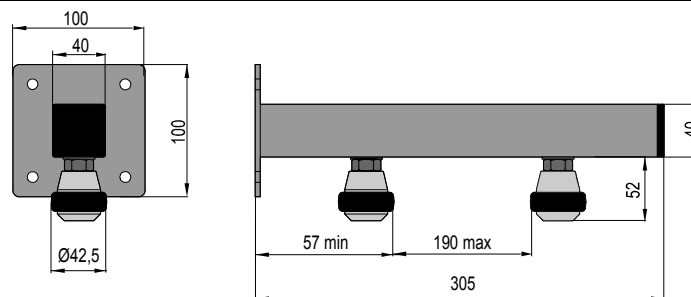


End stopper without wheel, in zinked steel.  
Embout extrémité sans roue, en acier zingue.

AD ESAURIMENTO  
TO EXHAUSTION  
À ÉPUISEMENT

ART.	Confez. Box	Peso Kg Weight
TAP/65	1	0,600

## STAFFA CON OLIVE REGISTRABILI



Counter plate with adjustable olives in nylon.  
Estribo con olivas regulables, de nylon.

ART.	Confez. Box	Peso Kg Weight
SO2000/AP2	2	1,400



PETTITI GIUSEPPE s.p.a.

## AEROSILENT MEDIO - MEDIUM - MOYEN

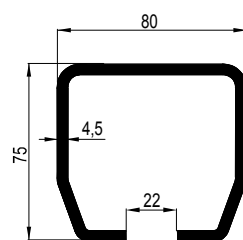
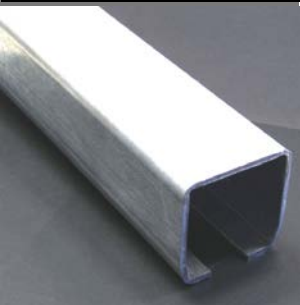
PORTATA CAPACITY	<b>Kg 180</b>	Per coppia di carrelli
PORTEE		For each pair of trolleys
APERTURA MAX. MAX OPENING OUVERTURE MAX	<b>5 m</b>	Pour couple de chariots

### CARRELLI ED ACCESSORI PER CANCELLI AUTOPORTANTI

### TROLLEYS AND ACCESSORIES FOR CANTILEVER GATES

### CHARIOTS ET ACCESSOIRES POUR PORTAILS AUTOPORTANTS

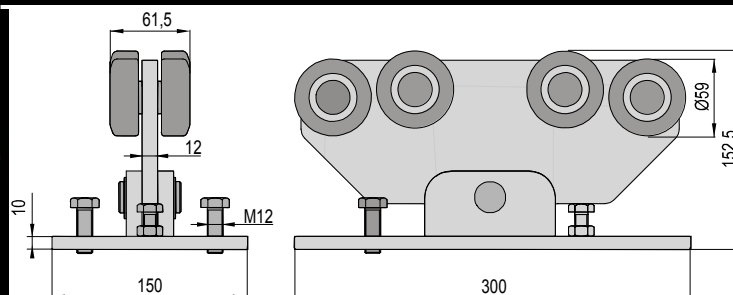
## MONOROTAIA IN ACCIAIO



Zinked steel rail.  
Monorail en acier zingue.

ART.	Confez. Box	Peso Kg Weight
G/AP80	12 m n° 2x6 m	Kg/m 8,890
G/AP80/3	12 m n° 4x3 m	Kg/m 8,890

## CARRELLO BASCULANTE A 8 RUOTE

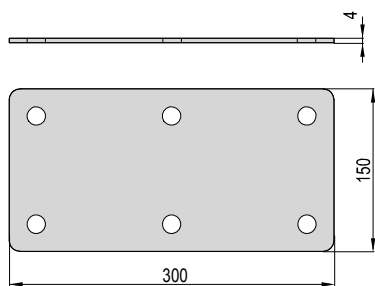


<b>CA/AP80</b>	Cuscinetti zincati Zinked bearings Coussinets zingue
----------------	--

Oscillating trolley with 8 wheels.  
Chariot oscillant avec 8 galets.

ART.	Confez. Box	Peso Kg Weight
CA/AP80	1	10,000

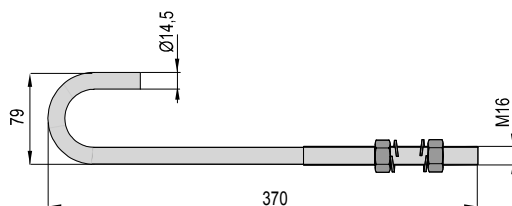
## CONTROPIASTRA PER CARRELLO



Counter plate for trolley, in zinked steel.  
Controplaque pour chariot, en acier zingue.

ART.	Confez. Box	Peso Kg Weight
<b>PIAS/AP6580</b>	1	1,400

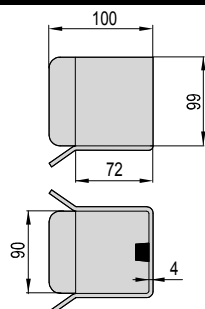
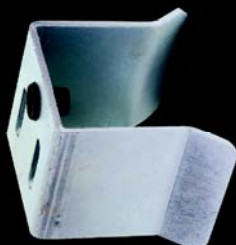
## TIRANTE IN ACCIAIO ZINCATO



Fixing tie roads, in zinked steel.  
Tirants de fixation, en acier zingue.

ART.	Confez. Box	Peso Kg Weight
<b>TIR/16</b>	2	0,550

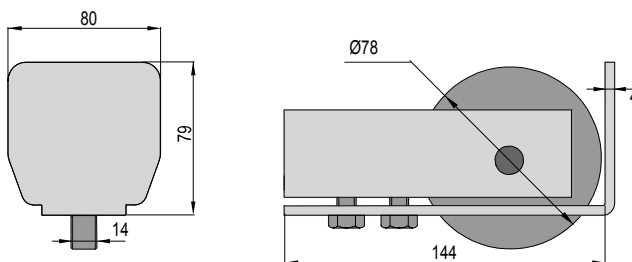
## INCONTRO PER MONOROTAIA



Cup for rail, in zinked steel.  
Butee pour rail, en acier zingue.

ART.	Confez. Box	Peso Kg Weight
<b>BAS90Z</b>	1	1,200

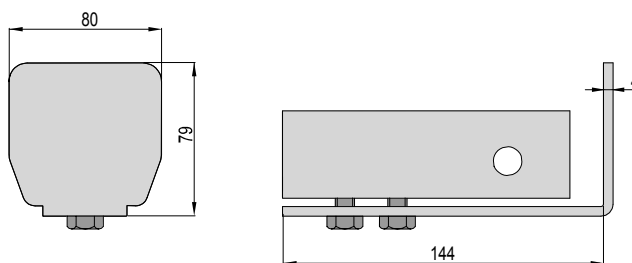
## SUPPORTO DI SOSTEGNO CON RUOTA



End stopper with wheel, in zinked steel.  
Embout extrémité avec roue, en acier zingue.

ART.	Confez. Box	Peso Kg Weight
<b>TAP/80R</b>	1	1,100

## SUPPORTO DI SOSTEGNO SENZA RUOTA

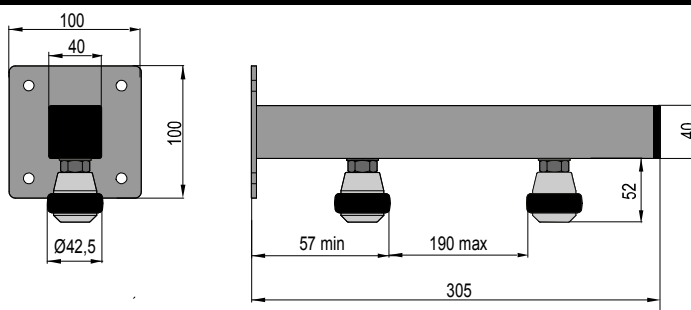


End stopper without wheel, in zinked steel.  
Embout extrémité sans roue, en acier zingue.

AD ESAURIMENTO  
TO EXHAUSTION  
À ÉPUISEMENT

ART.	Confez. Box	Peso Kg Weight
<b>TAP/80</b>	1	0,600

## STAFFA CON OLIVE REGISTRABILI



Counter plate with adjustable olives in nylon.  
Estrubo con olivas regulables, de nylon.

ART.	Confez. Box	Peso Kg Weight
<b>SO2000/AP2</b>	2	1,400



PETTITI GIUSEPPE s.p.a.

## AEROSILENT GRANDE - BIG - GROS

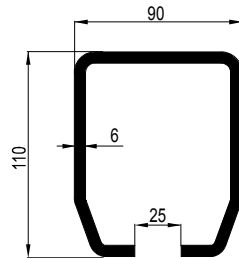
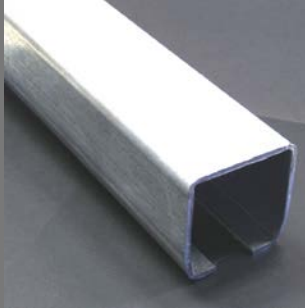
PORTATA CAPACITY	<b>Kg 300</b>	Per coppia di carrelli
PORTEE		For each pair of trolleys
APERTURA MAX. MAX OPENING OUVERTURE MAX	<b>10 m</b>	Pour couple de chariots

**CARRELLI ED ACCESSORI PER CANCELLI AUTOPORTANTI**

**TROLLEYS AND ACCESSORIES FOR CANTILEVER GATES**

**CHARIOTS ET ACCESSOIRES POUR PORTAILS AUTOPORTANTS**

### MONOROTAIA IN ACCIAIO

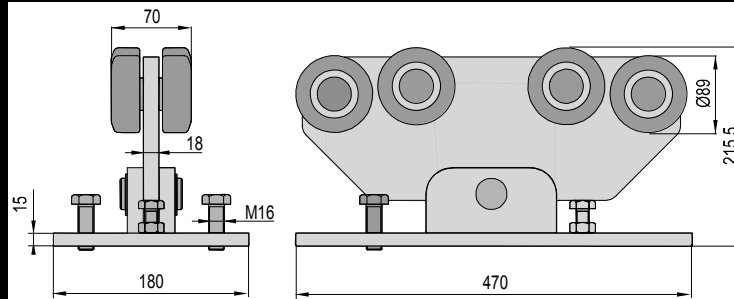


Zinked steel rail.

Monorail en acier zingue.

ART.	Confez. Box	Peso Kg Weight
<b>G/AP90</b>	6 m n° 1x6 m	Kg/m 15,390
<b>G/AP90/3</b>	6 m n° 2x3 m	Kg/m 15,390

### CARRELLO BASCULANTE A 8 RUOTE



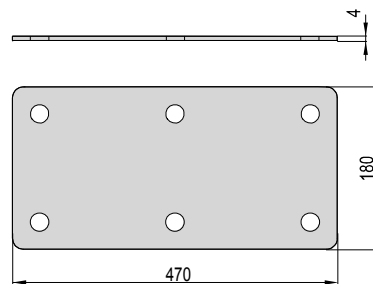
**CA/AP90** Cuscinetti zincati  
Zinked bearings  
Coussinets zingue

Oscillating trolley with 8 wheels.

Chariot oscillant avec 8 galets.

ART.	Confez. Box	Peso Kg Weight
<b>CA/AP90</b>	1	27,000

### CONTROPIASTRA PER CARRELLO

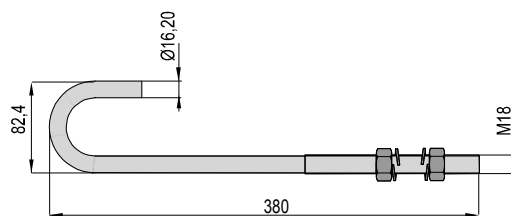


Counter plate for trolley, in zinked steel.

Controplaque pour chariot, en acier zingue.

ART.	Confez. Box	Peso Kg Weight
<b>PIAS/AP90</b>	1	2,660

### TIRANTE IN ACCIAIO ZINCATO

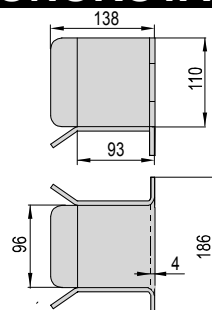
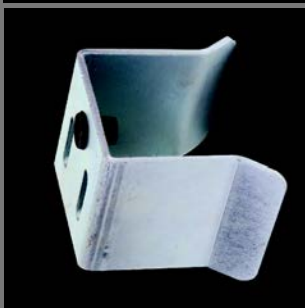


Fixing tie rods, in zinked steel.

Tirants de fixation, en acier zingue.

ART.	Confez. Box	Peso Kg Weight
<b>TIR/18</b>	2	0,600

### INCONTRO PER MONOROTAIA

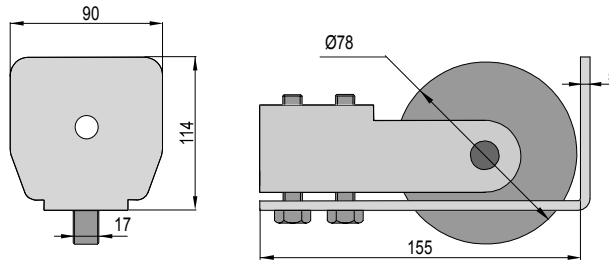


Cup for rail, in zinked steel.

Butee pour rail, en acier zingue.

ART.	Confez. Box	Peso Kg Weight
<b>BAS96Z</b>	1	1,771

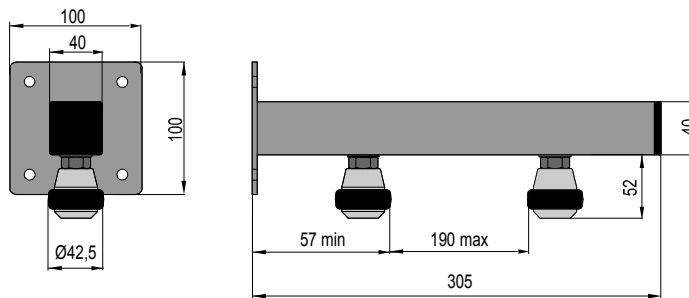
## SUPPORTO DI SOSTEGNO CON RUOTA



End stopper with wheel, in zinked steel.  
Embout extrémité avec roue, en acier zingue.

ART.	Confez. Box	Peso Kg Weight
TAP/90R	1	1,100

## STAFFA CON OLIVE REGISTRABILI



Counter plate with adjustable olives in nylon.  
Estribo con olivas regulables, de nylon.

ART.	Confez. Box	Peso Kg Weight
SO2000/AP2	2	1,400

*L'applicazione è valida per l'AEROSILENT piccolo, medio e grande.*

*Application valid for small, medium and big AEROSILENT.*

*L'application est valide pour l'AEROSILENT petit, moyen et gros.*

